



SPONSORED PROGRAMS

& IPAC Information



A Message to Members

No matter what part of the state you live, every school leader is looking for ways to save money and keep dollars inside the classroom, where they can have the greatest impact on student growth. IASA Sponsored Programs are designed to keep the market honest and give you trustworthy options.

We have developed initiatives in house and partnered with like-minded organizations to offer essential services and assistance that can save schools money and maximize benefits to all members.

From discounted prices on health insurance, reduced energy costs, investment programs to compliance with education reforms, an IASA Sponsored Program can benefit your school district.

We have compiled this packet as a one-stop shop to quickly learn about the different options available. Please take a moment to review this packet and consider calling the designated contact to learn more.

Yours for better schools,

What's Inside





IASA, IASB, IASBO Program
Offers Members Comprehensive
Health Insurance

Brokerage Service That Seeks Best Deal Annually For Schools

What Makes ISEBC Unique?

- Large Group Purchasing Power
- Discounted Health Insurance Premiums
- Premium Stability
- Discounted Ancillary Premiums
- Free HR Consulting
- Customizable Benefit Designs
- ACA Compliance, Reporting and Filing
- Online Benefit Enrollment System

Areas served by:

Clemens and Associates

Contact: Travis Cockburn

Phone: 618-529-1888

Email: tcockburn@clemensins.com

Areas served by:

American Central Insurance Services

Contact Jeremy Travelstead

Phone: 877-698-2247

Email: jeremy@americancentralins.com

Areas served by:

J. Krug

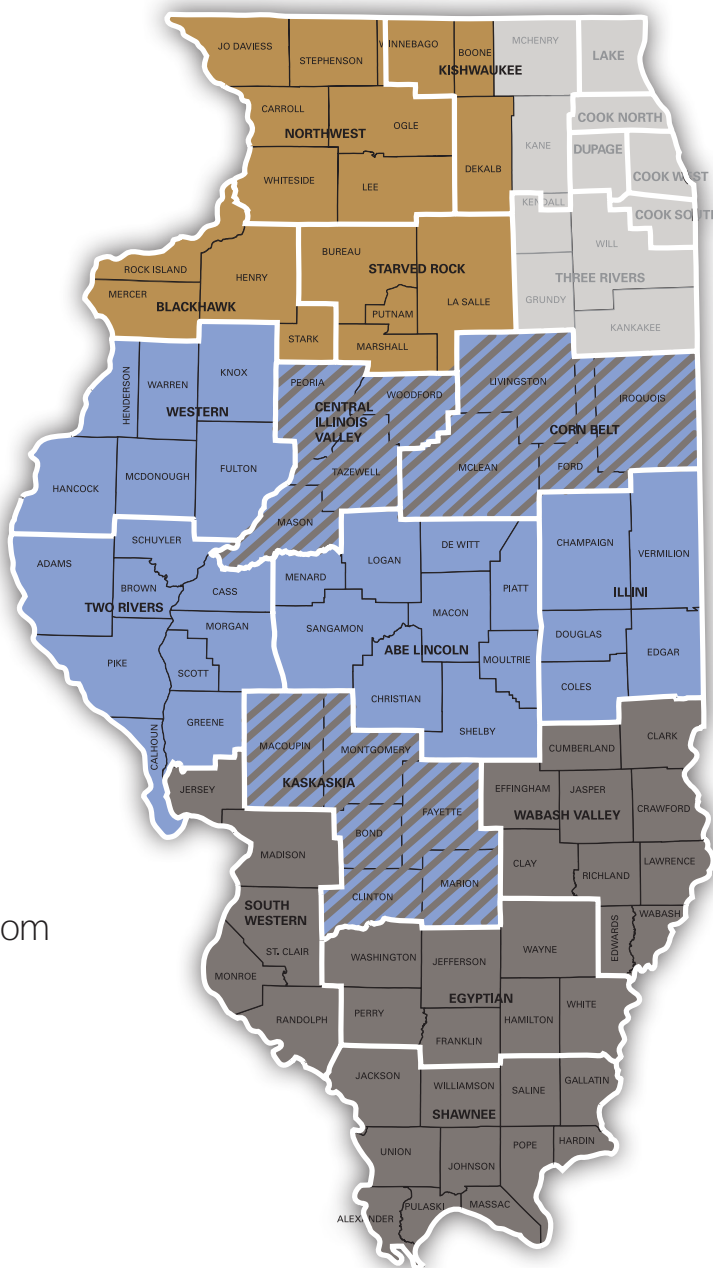
Contact: Logan Simios

Phone: 847-818-7540

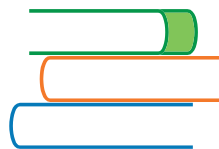
Email : lsimios@jkrug.com

Areas served by MSEBP

(separate IASA-Sponsored Program)



Affordable Health Insurance
Solutions for School Districts in
**Cook and Surrounding
Counties**



MSEBP
Metropolitan Schools
Employee Benefits Program

Sponsored by IASA, IASB and IASBO; Brokerage Service Administered by Alliant Insurance Services

Why Choose MSEBP? Learn About Our Success Stories

DuPage County K-12 School District:

Leveraging carrier relationships, Alliant reduced program costs by over \$500,000.

McHenry County K-12 School District:

Employees requested more medical plan options which Alliant was able to procure while also reducing overall program costs.

Will County K-12 School District:

Participated in one of the largest state pools but desired a customized program with different plan options. Alliant developed a program to meet their specific needs and streamlined the overall program administration.

Extra Benefit of Enrolling in MSEBP: Pharmacy Benefit Management

Alliant's Pharmacy Team is comprised of PharmD's, PHD's and Pharmacy Consultants with decades of underwriting experience who are able to dig into the details of PBM contracts and negotiate with Blue Cross Blue Shield/Prime Therapeutics to provide competitive offers to clients.

Example 1

Local school district client has 550 employees with BCBS PPO & HDHP/HSA plans (ASO funding). **Alliant was able to save client 18.5% (or \$500k annually) with BCBS for their 7/1/24 renewal without changing benefits.**

Example 2

Local school district client has 840 employees with BCBS PPO (ASO funding) & HMO (Cost Plus funding). **Alliant saved this client 20.1% (or \$896k annually) with BCBS for their 10/1/24 renewal without changing benefits.**

Other Key Services Provided to School

- Free Evaluation of current health insurance program
- Procurement System (Online bidding, contract management system can save 20% on average for Dental, Vision, Life/AD&D and Disability programs)
- Compliance Consulting
- Wellness Program Evaluation and Deployment
- Human Resources Management and Support
- Online Benefits Enrollment Platform
- Touchpoints Portal

For more information, contact:

Patrick Sheahan, Senior Vice President,
312-595-7166,
Patrick.sheahan@alliant.com

Brian Tyrrell, Senior Vice President,
312-595-6585,
brian.tyrrell@alliant.com



ISDLAF+

ILLINOIS SCHOOL DISTRICT LIQUID ASSET FUND PLUS

Guarding, guiding and growing your investments

SPONSORED BY: IASBO, IASB & IASA

DISCOVER THE POWER OF THE PLUS

Since 1984, ISDLAF+ has earned a well-deserved reputation among Illinois school districts and community colleges. ISDLAF+ is known for its excellent performance built around the safety, liquidity and yield that school officials want.

As an ISDLAF+ Participant, you can benefit from a full range of cash management and investment services designed specifically for school districts. These include:

- Banking and Cash Management
- Cash Flow Management
- Bond Proceeds Management (PMA Securities)
- Money Market and Liquid Investment Options
- Fixed Income Investments
- Credit Risk Analysis

About ISDLAF+

A Complete Line of Value Added Services

The Illinois School District Liquid Asset Fund Plus (ISDLAF+) is an investment opportunity for school districts, community college districts, Cook County Township school treasurers and educational service regions.

ISDLAF+ Products & Services

The Multi-Class Series

The Multi-Class Series offers two premium pooled investment products managed by PMA Asset Management, LLC, an experienced SEC registered Investment Adviser providing fixed income sector and credit research specialization.

The Liquid Class allows for unlimited check writing privileges and offers competitive yields. Select our Max Class for higher potential yields with no minimum balance. Each conservatively-managed portfolio is rated AAAM by Standard & Poor's, and is designed to meet your daily liquidity needs. With the experience and expertise of PMA, the Multi-Class gives you access to a powerful investment management team that functions with a high standard of vision, synergy, and quality.

Term Series Pools

The Board of Trustees of ISDLAF+ has authorized the creation of an unlimited number of investment pools called the Term Series. Each Term Series will be comprised of statute allowable investments and will have a designated maturity of between 30 days and three years.

Fixed Income Investments

ISDLAF+ Participants also have the option to select Certificates of Deposits with FDIC insurance up to the \$250,000 limit, Certificates of Deposits secured by a FHLB Letter of Credit (for large block investing), U.S. Government Treasury securities, U.S. Government Agency & Instrumentality securities, Bankers' Acceptances, Commercial Paper and Repurchase Agreements.

Cash Flow Management Program

Giving you a complete and accurate picture of your district's cash flow so you can put your money to work sooner... and longer.

Bond Proceeds Management Program

Bringing your project to life with a comprehensive investment and arbitrage management program for bond proceeds through PMA Securities, LLC.

School Finance User Group Seminars

ISDLAF+ Participants are invited to attend quarterly user group seminars at various locations throughout Illinois.



Contact Information



AUDRA BRASKI

Senior Vice President,
LGIP Director

630-657-6422

abraski@pmanetwork.com

www.isdlafplus.com

Why Choose WCSIT?

Customized Coverages.
Competitively Priced.
Higher Liability Limit.

24/7
online claims
portal

\$215M
in claims paid
since inception

\$21M +
in payments back
to members

\$3M
for Employers'
Liability
Coverage

Program Administration/Management

Under the administration of The Sandner Group—Insurance Program managers, WCSIT has become the largest and most successful self-insurance pool for school districts' workers' compensation in Illinois. Working with its service providers, WCSIT searches for cost effective ways to provide coverage.

Claims Administration—Supported by the CM Claims Portal

WCSIT entrusts The Sandner Group—Claims Management (CM) to provide exemplary claims administration service, including Litigation Management and Medical Cost Management. CM works with members to ensure that injured employees are treated fairly and return to work as soon as possible.

Agents Throughout the State

Because WCSIT gains its strength through membership, The Sandner Group—Alternative Risk Solutions (ARS) is charged with the task of getting the word out to Illinois school districts about the great benefits of WCSIT membership. ARS has expanded the network of agents located throughout the state to increase the availability of local representation to service Members' needs.

For More Information Contact

James Woodard
The Sandner Group
Insurance Program Managers
312-930-6124

ISDA

Illinois School District Agency

The Illinois School District Agency (ISDA) offers comprehensive coverage for Illinois school districts. Property and Casualty Coverage includes protection from damage to or loss of property, with limits for flood and earthquake up to the total insured value of the ISDA member's buildings. ISDA also offers coverage for general liability, school vehicles, equipment breakdown and umbrella liability limits up to \$2 million.

**24/7**
claims
portal**\$120M**
in claims paid
since inception**We expedite
return to normal**

Property • Auto • General Liability • School Board Legal Liability Insurance

Cyber Coverage

The Cyber Plan provides a variety of coverages, including paying the costs of investigations for security, privacy or confidentiality breaches. Further, the Cyber Plan provides coverage for areas of extortion concerning the release of private information and electronic data. The Cyber Plan also covers costs to restore damaged or lost data as well as business interruptions. Finally, it covers damages as a result of liability for a member's failure to prevent a breach. As part of the Cyber Plan, a 24-hour phone and email hotline are available. The Cyber Plan is offered with limits of \$1 million for most of the coverages offered.

School Board Legal Liability (SBLL)

SBLL is a must have core coverage as the volume of claims increases. The SBLL program covers former, present and future school board members, administrators, employees and volunteers.

SBLL provides comprehensive coverage of up to \$10 million for eligible school districts and school boards for actual or alleged breach of duty, negligent acts, errors, omissions and misstatements. Defense sub-limits for critical areas of probable claims, such as special education, employment practices and contract disputes, are included in the basic coverage.

Student Accident Coverage

Student Accident Coverage helps cover medical costs for preK-12 students who are injured while attending regular school sessions, while traveling to and from school, or while participating in most school-sanctioned activities. With a limit of \$5 million, this excess coverage also includes an accidental death benefit of up to \$12,000 and an accidental disbursement benefit of up to \$11,000.

Active Assailant

The Active Assailant Plan offers a combination of property and casualty coverages in the event of a violent attack. Property damage caused by a person(s) attempting to cause serious harm by use of a vehicle, explosive device or handheld weapon will be covered under the plan. Demolition costs for a building found to be no longer of use are covered. The Active Assailant Plan is offered with a limit of \$500,000.

**Supported by the
CM Claims Portal**

For More Information Contact

James Woodard,
The Sandner Group, Insurance Program Managers
312-930-6124

Empowering Schools to Save Money Through Renewable Energy Solutions and Collective Purchasing Power

IEC Powered by Future Green is Illinois' largest school energy management group co-sponsored by IASA, IASBO and IASB. The program is rooted in helping schools lower utility costs, which allows districts to allocate more funds directly to student learning. Savings can be achieved through a wide range of services.



Did You Know IEC Powered by Future Green Can Help With ■■■

Members Benefits:

- Dedicated Account Representative
 - Fixed & Managed Product Options
 - Online Portal for Account Management
 - Transparent & Competitive Pricing
 - Quarterly Newsletter
-

Interested in Harnessing the Power of an Energy Consortium?

Contact Haj Young at
haj@future-green.org
or 815-200-8721

Utility Bill Breakdown

Unlock potential savings with a guided analysis & walk-through.

Renewable Energy Assessment

Get a complimentary report about sustainable solutions customized for your district.

Renewable Energy Development

From start to finish, develop on-site solar projects while having the protection of the associations.

Annual Budget Forecasting

Plan ahead with an energy expenditures and usage report.

Consolidated Billing Options

Streamline your commodity and utility charges on one invoice.

Electric Supply and Administration

Control costs and achieve budget goals.

Natural Gas Program

Manage your costs and risk exposure over time.

Bus2Grid Initiative

Electrify your bus fleet and leverage V2G revenue opportunities

Energy Expert

Access to an exclusive energy account specialist who will diagnose energy usage (Electric, Water, Gas), create corrective action plan and manage implementation of the plan

Supplier Billing Issues

Encounter any billing issues with your energy supplier? Our team will promptly intervene to secure a swift resolution.



**Renewed
for 2nd
Year**

IASA Compliance Plus Provides On-Demand and Customized Support

IASA launched Compliance Plus last year to help districts save time and navigate ISBE and ROE compliance more efficiently. What participants found was the program extended well beyond compliance, helping district leaders maximize transportation claims, utilize indirect costs and implement more streamlined procedures.

Based on overwhelmingly positive feedback, IASA Compliance Plus is returning for the 2024-25 school year. Sign up today to be among the 40 districts that have access to facilitators Cheryl Graff, former Regional Superintendent, and Robert Wolfe, former Chief Financial Officer at ISBE. Cheryl and Robert provide on-demand and customized support to your questions on a wide range of matters dealing with school finance and compliance.

Cost

Flat rate of \$5,200 per district. This service will likely align with your district's Risk Management Plan, making tort funds available. Contact your district's legal counsel.

Availability

Exclusively to the first 40 districts who confirm interest and intent of payment for this additional IASA membership service.



Facilitators

- **Cheryl Graff** served as Regional Superintendent in ROE #30 for 6 1/2 years before retiring.
- **Robert Wolfe** recently retired from ISBE after 33-plus years as Chief Financial Officer.

**Visit IASA website
to Complete
CompliancePLUS
interest form.**

Questions?

Contact Jason Nevel
at jnevel@iasaedu.org
or call 217-753-2213

Introduce New School Vendor Security System



Safe School ID

Enrollment for Schools and Vendors Portal Now Open

Ensuring student safety is multi-faceted, but one way to provide another layer of security, and manage risk, is to vet more of the people that enter school buildings and campuses.

Safe School ID, a new jointly sponsored program by IASA and IARSS, provides the tools and the power to fully vet and manage every vendor employee who enters a school—at no additional cost to the district.

SSID conducts background checks on all vendor employees, providing your district another tool in liability and risk management. The vendor management system is also designed to streamline access control by managing vendor entries with a sophisticated system that registers, verifies, and tracks all visitors.

What's unique about SSID is that schools retain 100% control over who they ultimately allow into their respective schools. SSID simply provides the tools, database, and tracking mechanisms for schools to make the most informed decisions.

Why Important?

In Illinois, thousands of vendor employees enter schools annually. While there are background check systems in place for school parents, guests and district employees, there is no comprehensive system available to school districts to vet and manage their school vendor employees.

Missed Informational Session?

[Watch Recording on IASA Website](#)

Questions: contact brittany@safeschoolid.net

How It Works

Since May 1, school districts have been able to opt into SSID through a Board resolution and registering online. Notices can then be sent to all vendors. A Board resolution template and a draft letter for vendors to streamline the process is available below and on the IASA website.

Since June 1, vendors can access the [SSID portal](#) to register and upload employee documents for background verification. The results of the verification process would be available to both the district and the vendor for each employee that is background verified and is in service to the district.

If approved, verified employees will receive a personalized QR code validation badge that can be downloaded into iOS or Android wallet and/or accessed online via smartphone. Printed and laminated badges can be purchased by the vendor through a third party vendor at an additional cost. SSID performs extensive background checks on each employee registered. There will be quarterly, automated re-verification for frequent vendor employees and annual automated re-verifications for infrequent vendor employees.

Districts will retain final control of who they allow on school premises. Once a vendor employee receives an SSID badge it would be usable at other participating districts, and the subsequent employee would not have to be re-verified for each district within the given timeframe.

Vendors Save with Early Bird Registration

There is a fee for this service and the vendor would be responsible for the fee. An early adopter period will run from June 1 through September 30 for vendors to process their employees at \$99/badge; beginning in October the regular price of \$129/badge would be in place. SSID badges are individually issued and cannot be shared amongst vendor employees.

Adopt Board Resolution

**Sign Up at
SafeSchoolID.net**

Draft Letter to Vendors

Senate Bill 7 Compliance Made Easy



**2024–2025 Software
Now Available for Purchase**

IASA's Senate Bill 7 Performance Rankings Tool

improves efficiency in your district by generating reports needed to comply with Senate Bill 7 and other related laws, freeing you up to focus your time and energy more on supporting your students and staff.

The program provides districts a method of managing district positions aligned to local qualifications, teacher's credentials and performance ratings. It's proven, affordable and used by districts across the state.

Affordable

The annual licensing fee is \$300 for members and \$600 for non-members.

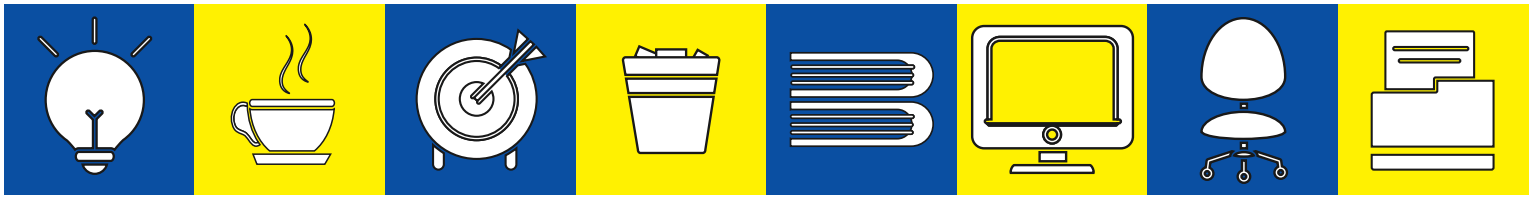
Find the access request form at: <http://www.iasasurveys.org>

What's new?

1. Updated tutorial videos.
2. Updated list of resources.
3. Updated Data Check cues to aid with properly completing the program.
4. Teacher Race column added to most reports.
5. Added columns for storing another cycle of evaluations.
6. Data Transfer Support: Data transfer from previous files to the 2024–2025 file can be completed by Dr. Don White for no additional charge.

This software was originally reviewed by the Senate Bill 7 teams from the Illinois Federation of Teachers (IFT) and the Illinois Education Association (IEA). The 2024–2025 version of this software builds on the knowledge gained from hundreds of users.

Please note that previous versions of the IASA Senate Bill 7 Performance Rankings File are no longer supported. Also, the service method for the 2024–2025 software will be via email only.



Jointly sponsored by IASA, IASB, and IASBO

Leverage Better Pricing While Reducing Administrative and Resource Time

Through the **Buy Board National Purchasing Cooperative** school districts can get the most out of district funds and streamline the procurement process.

Vendors are awarded contracts for products and services through a competitive procurement process, thereby giving BuyBoard members the opportunity for bulk discounts combined with the ease of online shopping.

Products available through BuyBoard include:

- Classroom teaching supplies and equipment
- Floor covering and sports surfaces
- Custodial supplies and equipment
- Recreation supplies and equipment, field lighting products
- Computers, software, and technology supplies and equipment
- Furniture
- Athletic supplies and equipment
- Library books, supplies, and equipment

Meet your procurement goals.

Save money through discounts secured by collective purchasing power.

Save time by eliminating the formal Request for Proposals process!

For additional information about BuyBoard, contact: David Ricketts at
david.ricketts@buyboard.com

or call **913-424-5758** or toll-free **800-695-2919**.

IASA Mentoring Program

Lighting Your Way

“““

Navigating your first year as a superintendent without participating in the mentoring program is like **driving in the dark without any lights.**

2 24/7, 365 SUPPORT

IASA's experienced Field Services Directors are available 24/7 to assist new and early-career superintendents. Call anytime!

1 NO ADDITIONAL COST

Participation in IASA's mentoring program is included in your membership dues paid for by your school district. Unlike other services, there's no additional cost to you.

4 TRUSTED ADVISORS

Each FSD has walked in your shoes and knows how to navigate difficult situations.

3 FACILITATE REGULAR MEETINGS WITH PEERS

Whether in person or virtual, monthly or weekly, your FSD will lead regular meetings that keep you connected with your peers and on track with tasks and deadlines and ahead of emerging issues.

5 SCHOOL FINANCE ASSISTANCE

Budgeting and filing the tax levy are two of the most important tasks for a superintendent. Each FSD has extensive experience on school finance and can help you avoid mistakes.

6 HELP WITH PERSONNEL ISSUES

Not sure how to handle a personnel matter? Simply contact your FSD anytime and get advice on how to handle sensitive issues.

You won't find a better value.
Call your IASA Field Services Director
for all your mentoring needs!



Why Support ★ IPAC?

What is IPAC?

IPAC is a statewide, non-partisan Political Action Committee (PAC), organized by members of the Illinois Association of School Administrators. It is funded by contributions from individual school administrators and the IASA. The dollars are distributed strategically as campaign contributions to legislators from both political parties aligned with our educational mission.

Why support IPAC?

A well-funded IPAC is an essential tool to get legislators to listen to our challenges and support our mission. Your donation ensures IASA keeps its seat at the table, secures face-to-face time with legislators and continues to have meaningful input on education policy. This partnership plays a key role in advancing IASA legislative priorities, reducing unfunded mandates and limiting legislation that could be harmful to school districts.

Contributions are also vital in IASA's ability to block or amend unfunded and curricular mandates introduced each legislative session.

Questions?

Contact Ashleigh Knudson at 217-753-2213 or aknudson@iasaedu.org.

What has IPAC accomplished?

The dollars have been integral to the success of Vision 20/20, the passage of Evidence-Based Funding and other key legislative victories that have improved public education in Illinois. Your contributions also help block or amend short-sighted legislation that has unintended consequences on student learning.

How much are IPAC Annual Contributions?

Our goal is to have every IASA member support IPAC. Annual contributions are \$100.

How is your contribution spent?

IPAC contributions position IASA to have legislative success. The funds are used to make strategic campaign contributions and pay costs associated with attending legislative outings and events. Attending these events increases our face-to-face time with legislators, enhancing our advocacy efforts.

Scan to contribute to IPAC today:





Don't want to pay online?

IPAC PAYMENT FORM FOR CHECK OR CREDIT CARD

Personal checks (made out to IPAC) or personal credit cards only.

Personal Check only:

Name: _____ Employer:* _____

Home Email Address:* _____ Occupation:* _____
For IPAC updates (both financial and informational)

Home Address : _____ ZIP: _____

**State law requires this information.*

Check # _____ payable to "IPAC" (Personal Check only)

Personal Credit Card only:

Charge \$ _____ to my (check one): ☐ Visa ☐ Master Card ☐ Discover Card

Card Number: _____ Expiration Date: _____ Card Verification No.: _____

Print Cardholder's Name: _____ Signature: _____

Billing Address of cardholder, if different from above (no PO Box numbers please):

Street: _____ ZIP: _____

**Return this form (along with your IPAC check if paying by check) to: IPAC, 2648 Beechler Court,
Springfield, IL 62703-7305**

If you have questions please contact Ashleigh Knudson at 217-753-2213 or aknudson@iasaedu.org